

Miss **AGHERCULTURE**



2025

National Handbook



agherculture.com | +1 307-222-8258

Welcome!

Welcome to the queen class of 2025! We are so very excited to join together to show confidence and beauty while advocating for our favorite industry Agriculture! A Miss agHERculture queen is someone who can promote their passions and connect with the community through a crown and sash. You should pick a platform to advocate on throughout your reign and to utilize during the competition. We hope you utilize your reign to gain confidence, learn more about the agriculture industry and to develop lasting relationships with fellow women in agriculture.

Congratulations on qualifying for Miss agHERculture Nationals!

Vision

For women to utilize a crown and sash as an avenue to educate the American consumer about the truth and power of the agriculture industry.

Mission

Miss agHERculture provides a platform for girls and women to openly discuss, educate, advocate, and cultivate conversations regarding American agriculture.

Motto

teachHER.

buildHER.

promoteHER.

agHER

Our Queens

National & American Queens: Women & Girls who won the national pageant and will reign for a year advocating for the agriculture industry.

State Queens: Women & Girls who won a state pageant or who registered to represent their state. All state queens qualify to compete in the National Pageant.

City Queens: Women & Girls who register to represent their city and are invited to compete at their state pageant. State pageants will be started in 2026 to compete at the 2027 National Pageant.

Age Divisions:
as of January 1, 2026

Young Miss 6 - 9 Years old
Junior Miss 10 - 12 years old
Teen Miss 13 - 16 years old
Miss 17 - 21 years old
Ms. 22 - 34 years old (un-married)
Mrs. 22 - 34 years old (married)
Elegant Ms. 35+ years old

National Staff

Holly Siebert, National Director
Contact: holly@agherculture.com

Charisse Hatfield, National Advisor
Contact: charisse@agherculture.com

Jessica Burke, National Advisor
Contact: jessica@agherculture.com

Randi Cole, National Advisor
Contact: randi@agherculture.com

Shelly Gardner, National Advisor
Contact: shelly@agherculture.com

General Administration Email
Contact: admin@agherculture.com
Phone: 307-222-8258

We would love to connect with you! Please feel free to email us, however please expect a response time of 5-7 days.

State Queen Apperances

Presence in State crown & sash:

- Sash should be displayed over the right shoulder.
- Sash should NOT be duplicated or altered in any way.
- Queens should be poised, respectful, and confident when representing Miss agHERculture Pageant.
- Queens should appear neat and wear appropriate attire for the occasion.
- Wineries & Breweries are supported by our system if you are a contestant in the Ms., Mrs., Elegant Ms. division. However, the queen should not consume an alcoholic beverage in crown and sash.

Online Presence:

- Queens are encouraged to create title-holder pages on their preferred social media site. Their title holder pages should display their Name, Title. **Example: Sally Sue, Young Miss Wyoming agHERculture**
- Tag national accounts
- Utilize hashtags! #agherculture #teachherbuildherpromoteher
- If you do not want the judges to view your post, you should not be posting it.

How to say or list your title:

Young Miss Tennessee agHERculture
Junior Miss New Hampshire agHERculture
Teen Miss Nevada agHERculture
Miss South Carolina agHERculture
Ms. Montana agHERculture
Mrs. Texas agHERculture
Elegant Ms. Wisconsin agHERculture

Platforms

A platform is a passion or cause that the queen wishes to advocate for during their state queen reign. For our program, we encourage you to create a platform based on agriculture. The queens platform should be displayed on their social media and will be added under their yearbook photo online and in the national yearbook.

Don't know where to start when creating your platform. Answer these questions:

1. What is your favorite part of agriculture?
2. Does this favorite have a pitfall?
3. How can you help the public fix this pitfall?

After you decide on your platform topic create a fun "catchline".

Example:

Safety in agriculture is a growing concern as there are many moving parts in machinery, electrical concerns, and more.
"Agricultures #1 Concern: Safety"

There will be Platform workshops set up throughout the year if you need assistance creating your platform.

State Queen Goals

What are things you want to accomplish in your state reign? Each queen has a minimum of 365 days, which will go rather fast, to accomplish goals, and dreams and to educate those on their platforms. These goals should be "SMART": Specific, Measurable, Achievable, relevant, and Time-bound. In each queen registration kit, a calendar with goal sheets has been gifted. Utilize this to create state queen goals.

Examples of some goals to set:

- Compete at the National Pageant
- Make two new friends within the pageant system.
- Create a platform and speak at one event about it.
- Win one area of competition at the national pageant.
- Visit another state
- Attend one 4-H/FFA event
- Read 10 books to the local elementary school.
- Organize and excute a clothing donation drive.
- Invite other women and girls to join Miss agHERculture

State Queen Referral

State Queens can refer other women and girls to register for a state queen title. When a state queen refers 5 individuals to register for a state title, then her American Entry Fees (\$300) are waived. *The referral MUST include the referring state queens name on their registration form to count.

National Pageant

National Pageant Dates: January 1 - 3, 2026

National Pageant Venues: Richardson, Texas
Renaissance Dallas Richardson Hotel

National Pageant Due Dates:

- September 1, 2025: Last Day to Register for State Title
- November 1, 2025: National Entry Fees Due
- November 1, 2025: American Entry Fees Due
- December 30, 2025: Emcee Cards Due
- December 30, 2025: Resume Due
- January 1, 2026 at 2 PM: People's Choice closes

Registration: At registration, you will check in with the national staff and will receive a welcome bag. This bag will include white competition t-shirt, party tickets, and a yearbook. Attire of choice and please wear state queen sash.

** Please do not forget to bring your state queen sash to the competition as you will be wearing it during the competition. After the division has completed Interview, Service & Advocacy, Advocate, Formal Wear, & Fun Fashion, the contestants will put on their state sash and parade in front of the judges for one final look. When the contestant lines up for these areas of competition, they should bring their sash to the national staff back stage.

Tentative Schedule

Wednesday:

8:30 PM - 12:30 AM: Offsite New Years Eve Party

Thursday:

7 AM - 2 PM: Registration

7 AM - 3 PM: Interview

8:30 AM - 3 PM: Photogenic

3 PM - 6 PM: Advocacy & Service Interview

3 PM - 4:30 PM: Knowledge

6 PM - 9 PM: VIP Party & Dinner

- Award Ceremony

Friday:

8 AM - 12 PM: Advocate

12 PM - 1 PM: Break

1 PM - 3 PM: State Fun Fashion

3 PM - 5 PM: Formal Wear

5:30 PM - 6 PM: Awards

6 PM - 7 PM: Finals

7:30 PM: Crowning

Saturday:

10 AM - 2 PM: National Queen Brunch & More

*This is based on 70 contestants.

A final itinerary will be released 30 days prior to the national pageant.

National Venue

Renaissance Dallas Richardson Hotel



Hotel Room Blocks will open in September. Rooms will be ~\$140/night.

Hotel includes gym, indoor swimming pool, restaurant, and Starbucks.

Events at Hotel: New Years Eve PJ Party, VIP Party & Dinner, National Queen Brunch & More, Registration, Photogenic Competition, Knowledge Competition, Interview Competition, and Service & Advocacy Interview.



National & American Titles

National titles:

Young Miss agHERculture
Junior Miss agHERculture
Teen Miss agHERculture
Miss agHERculture
Ms. agHERculture
Mrs. agHERculture
Elegant Ms. agHERculture

All contestants competing at the National Pageant will compete for their divisions national title. National Entry fees are \$500. Areas of competition are: Interview, Advocate, Formal Wear, Service & Advocacy, & Showmanship. The contestants with the highest scores will continue to finals to answer the on-stage question. This question will split any ties within the division.

American Titles:

American agHERculture Princess
American agHERculture
American agHERculture Elite

Contestants that wish to compete for the American title must be registered to compete for the National title. American Entry fees are an additional \$300. Areas of competition are Interview, Advocate, Formal Wear, Service & Advocacy, Showmanship, On-Stage Question, Fun Fashion, Knowledge, Photogenic, & Resume. Those in Young Miss & Junior Miss divisions will compete for the Princess title. Contestants in Teen Miss and Miss will compete for the Queen title. Contestants in Ms., Mrs., Elegant Ms. will compete for Elite title.

Double crowning is allowed between National and American titles.

Scholarships

One of the main goals of Miss agHERculture is to award scholarships to our queens! Through increased entry fees and registrations scholarship amounts will increase. It is the national staff's goal to reduce pageant costs to ensure scholarships stay strong.

National Entry Fees - a portion of these fees will go directly to their division's scholarship. This means when the division has more participation they will see a higher scholarship.

American Entry Fees - a portion of these fees will be divided evenly across the 7 national age divisions, 3 American titles and Scholarship Ambassador(s) if there are any.

National Scholarship Ambassador - the \$5000 will be divided evenly across the 7 national age divisions and 3 American titles. Example: 4 Scholarship Ambassadors (\$20,000) = minimum \$2000 per National and American title.

This is all to show how participation and our contestants getting sponsors affect the scholarships.

Other Scholarships

Runner-up Scholarship:

- In the instance that there are more than 15 contestants in the age division then a 1st and 2nd Runner-up Scholarship will be given.
- In the instance that there are more than 30 contestants in the age division then 1st, 2nd, 3rd, & 4th Runner-up will receive a scholarship.

**** Scholarships are under the discretion of the National Staff** and specified amounts will be posted no later than December 1st, 2025.

Awards & Crowning

The following awards will be presented during the award ceremony prior to the Finals (Saturday).

- Miss Congeniality: A trophy will be awarded to the contestant, the contestant vote showed congeniality throughout their reign and during the pageant.
- Spirit of Miss agHER: A trophy will be awarded to the contestant who showed showmanship towards all contestants, family, and the directors throughout their reign. The winner of this award will receive paid registration and entry fees to the 2027 national pageant. Chosen by National Staff.

The following awards will be presented during the crowning ceremony (Saturday).

- Area of Competition Awards: In each Division the contestant with the highest score will step forward to the front of the stage and receive an award. The following areas of competition will be recognized:
 - Interview
 - Advocate
 - Formal Wear
 - Service & Advocacy
 - On-Stage Question
 - Fun Fashion
 - Knowledge
 - Photogenic
 - Resume
- The contestants that made it to the finals (top 3, 5 or 10) will receive medallions.
- Runner-up awards will be announced during divisional crowning.
- Divisional and American winners will be presented with sash, crown and bouquet of flowers and will take their first walk in their new crown & sash.

Awards

The following awards will be presented during the award ceremony at the VIP Dinner (Thursday).

National Miss agHERculture Scholarship Ambassador(s)

National People's Choice - Princess (Young Miss & Junior Miss)

National People's Choice - Queen (Teen Miss & Miss)

National People's Choice - Elite (Ms., Mrs., Elegant Ms.)

Weekly Social Media Winners

Misc. Awards - Announced in Queen Community Page at a later date

** Those awarded National Miss agHERculture Scholarship Ambassador(s) and/or National People's Choice winners will NOT compete at the National competition with newly awarded title. They will compete with their 2025 state title.

Prize Package

The following prize package will be for these crowned titles:

Young Miss agHERculture
Junior Miss agHERculture
Teen Miss agHERculture
Miss agHERculture
Ms. agHERculture
Mrs. agHERculture
Elegant Ms. agHERculture
American agHERculture Princess
American agHERculture Queen
American agHERculture Elite

Rhinestone National Sash
National Crown
Fresh Floral Bouquet
Scepter
Scholarship - total amount announced December 1, 2025
Personalized Embroidered Gymnastic Jacket
Sash Bag
Embroidered Garment Bag
Crowning Photography
Press Coverage
Autograph Cards & Business Cards
Invitation to National Queen Summer Camp
Full Page in 2027 National Yearbook
Misc. Prize Package

Prize Package

The following prize package will be for these crowned titles:

Miss agHERculture Scholarship Ambassador(s)

Rhinestone National Sash
National Crown
2027 National & American Entry Fees Paid
Fresh Floral Bouquet
Scepter
Scholarship - total amount announced December 1, 2025
Personalized Embroidered Gymnastic Jacket
Press Coverage
Autograph Cards & Business Cards
Invitation to National Queen Summer Camp
Full Page in 2027 National Yearbook
Misc. Prize Package

The following prize package will be for these crowned titles:

National People's Choice - Princess
National People's Choice - Queen
National People's Choice - Elite

2026 State Queen Registration Fees Paid
2026 State Sash
State Crown
2027 National & American Entry Fees Paid
Press Coverage
Autograph Cards & Business Cards
Full Page in 2027 National Yearbook
Misc. Prize Package

Entry Fees

Entry fees are used to pay for all expenses to hold a National pageant. This includes venue, crowns, sashes, prizes, scholarships and more! The more entry fees paid the higher scholarships will be. See Scholarships on page 14 to learn how your age division will earn their scholarship.

National Entry Fees: \$500

American Entry Fees: \$300*

*Contestant must submit National Entry fees to be eligible to submit American Entry fees. See breakdown of National & American titles on page 13.

Additional Entry Fees:

\$1000 TOTAL Entry Fee: National & American Entry + Miss Photogenic digital copy emailed to contestant after pageant.

\$1500 TOTAL Entry Fee: National & American Entry + One page spread in Yearbook (11.5 x 8") - Contestant or National Staff Design.

- This is a great way to thank your sponsors and show images from your time during your state crown.

\$5,500 TOTAL Entry Fee: National & American Entry + Miss agHERculture Scholarship Ambassador title, image on cover of yearbook, and crowning at VIP Party. Those who secure this title will also be invited to compete at the 2027 national pageant and will have their National Entry Fees covered.

*MORE than one contestant can claim this opportunity.

Yearbook

The national yearbook is a hardcover printed book given to each contestant that memorializes their year as a state and national title holder. The yearbook will contain class photos, class awards, photos of state queens during their reign, and more.

With the \$500 National Entry Fee the contestant will receive their copy of the yearbook at check-in and receive their class photo in the year book. To receive full page spread in the Yearbook the contestant must submit additional entry fees. See more information on page 14.

Class Photo example:



Scoring

National Divisional Title:

- 25% - Interview
- 25% - Advocate
- 20% - Formal Wear
- 20% - Service & Advocacy
- 10% - Showmanship

On-Stage question does not count towards the Texas divisional title total score. It is ONLY to be used to break placing ties.

American Title:

- 10% - Interview
- 10% - Advocate
- 10% - Formal Wear
- 10% - Service & Advocacy
- 10% - Showmanship
- 10% - On-Stage Question
- 10% - Fun Fashion
- 10% - Knowledge
- 10% - Photogenic
- 10% - Resume

Judge scoring will be made through the online program Bombyhead. All areas of competition will be scored out of 20 points and judges can score using 0.5 points. A scoring handbook that the judges will utilize is available online.

*Reminder you **MUST** compete in National Divisional. Competing for American is **OPTIONAL**.

Interview

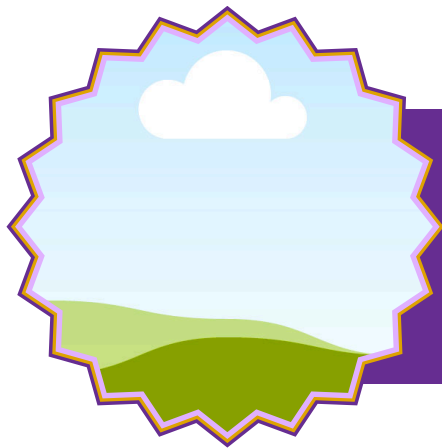
The goal of this area of competition is to have a one-on-one conversation about yourself, goals, platform and more with each judge. This interview will be round robin style, where four contestants will be in a room with the four judges. Each contestant will get 3 minutes in front of each judge to have their interview. Each judge's table will be spaced out, so your conversation shouldn't distract other contestants. Example interview questions are available on the website. Each contestant is more than welcome to bring a resume with them to hand to the judges.

Time: 3 minutes with each judge = 12 minutes total in the interview room.

Attire: Pageant interview Dress, Blazer, Jumpsuit, etc.

Example of a Resume on the next page.





Queen Name
Title

WHY I DESERVE TO BECOME THE NEXT MISS AGHERCULTURE

Explination...

EDUCATION

Bachelor of Business Administration

Jan 2019 - Feb 2021

University of Business Excellence

- Major in International Business.
- Final GPA: 3.90

Foundation in Business Administration

Jan 2018 - Dec 2018

Borcelle University

- Final GPA: 3.80

KEY SKILLS

- Office Suite software.
- Data entry.
- Organizational and time management skills.
- Corporate communications.
- Problem solving.
- Customer service.
- Attention to details.
- Fluent in English and Mandarin.

EDUCATIONAL AWARDS & HONORS

- Awards
- Honors

SCHOLASTIC & CAREER GOALS

- Obtain a Doctorate in Veterinary Medicine (DVM)
- Pass the National and State Licensing: In the United States, you will need to pass the North American Veterinary Licensing Exam (NAVLE).
- Obtain a position at a small town Veternarian clinc specifically helping small animals.

INTERESTING FACTS

Can run a mile in less than 7 minutes, enjoy reading and have read more than 100 books this past year, loving making sourdough, and enjoy hiking.

Advocate

This area of competition is for the contestants to become a spokesmodel for their platforms. Personal platforms should be the center of the queen's reign, something they inform, encourage, and promote to the general public. This can be performed in a speech or demonstration. Each contestant will have access to a projector, small table, and easel if necessary. The microphone can be on the stand or held by the contestant. When the contestant submits national entry fees and forms, they will need to notify national staff of these needs in the "Advocate" section.

Time: 3 minutes. For every 20 seconds over, 1 point will be deducted from each judge. A large LED countdown clock will be displayed on the judges' table for the contestant to look at.

Attire: Contestant Choice (Dress for what your speech/demonstration is portraying. Example: Career Ready Wear, Business Professional, etc.)

Formal Wear

This area of competition is for the contestants to express their natural beauty and exert confidence while in gown of their choice. Each contestant will prepare a 60-75 second monologue in third person about themselves for the emcee(s) to read while the contestant is modeling on stage. An example of "Formal Wear Emcee Cards are available on the website". Modeling pattern will be posted on the website.

Time: 60 - 75 seconds. For every 20 seconds over, 1 point will be deducted from each judge. A large LED countdown clock will be displayed on the judges table for the contestant to look at.

Attire: Age appropriate full length gown.



Emcee Card

For Formal Wear:

Sally Sue is honored to serve as your Young Miss Alaska. She is the proud daughter of John and Mary Sue and the loving sister of Jake and Emma. Her family plays a big role in supporting her passions and cheering her on every step of the way. Sally lives in Homer, Alaska, where she enjoys fishing, exploring the outdoors, helping in the garden, and caring for her animals. She has a special interest in Alaska's unique agriculture and wildlife and loves sharing fun facts about farming and nature with others. Sally has already earned recognition for her dedication and hard work. Some of her recent accomplishments include: First Place in the Alaska Youth Agriculture Poster Contest, 2025 Junior Showmanship Winner at the Alaska State Fair, and Citizenship Award at her elementary school.

As Young Miss Alaska, Sally hopes to inspire other young girls to believe in themselves, explore the world of agriculture, and take pride in where they come from. She is excited to represent Alaska with kindness, enthusiasm, and a big heart.



Advocacy & Service

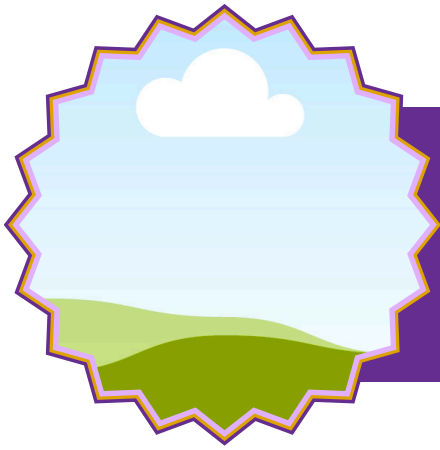
This area of competition is for the contestants to display their adventures and community service acts during their state reign. Each contestant will create a Community Services & Advocacy Resume, which the judges will review and ask questions to the contestant during an interview. An example resume is posted on the website. This interview is a panel interview.

Time: 3 minutes. Contestants will hear a knock on the door when they have 30 seconds remaining.

Attire: White Competition T-shirt & black bottoms of choice.

Resume example on the next page.





Queen Name

Title

Platform

SERVICE

Item	Date	Item	Date	Item	Date

ADVOCACY

Item	Date	Item	Date	Item	Date

Showmanship

Each contestant should be poised, polite, confident, respectful, and gracious on and off the stage. You never know where the judges may be throughout the pageant weekend. This score, should be an easy points for each contestant!

All contestants will be judged throughout pageant weekend. The judges may also look at social media accounts of each contestant.

On-Stage Question

The only contestants eligible to compete in on-stage question are those who have secured a top spot in the National age divisions. At this point of the competition all areas of competition have been scored National and American. Each age division will have the highest scoring 3, 5, or 10 contestants (depending on division size) continue to receive a question in front of the crowd. This will be an age appropriate, non-politically based question. There will be three questions, Young Miss & Junior Miss will receive the same question. Teen Miss & Miss will receive the same question and Ms., Mrs., and Elegant Ms. will receive the same question. Contestants who made it into finals will be held in a room without the ability to listen to the question. Once the contestant has answered the question they will not be allowed back in the holding room.

Time: 60 seconds to answer the question. For every 20 seconds over, 1 point will be deducted from each judge. A large LED countdown clock will be displayed on the judges table for the contestant to look at.

Attire: Formal Wear - contestants will wear the same dress from Formal Wear competition.

Fun Fashion

In this area of competition, contestants will express their creativity and love for all sectors of agriculture through their attire. A written description of the contestant's attire will be read when the contestant is modeling. This emcee card can and should include agricultural facts about their fun fashion.

Time: 60 - 75 seconds of modeling. For every 20 seconds over, 1 point will be deducted from each judge.

Attire: Creative costume, either bought or made to represent agriculture.

Emcee Card Example:

Now taking the stage is your Young Miss Alaska, Sally Sue, proudly representing one of Alaska's most iconic industries—fishing! Dressed in her custom outfit inspired by the hardworking men and women of Alaska's commercial and recreational fishing communities, Sally showcases her love for the outdoors and her home state's natural resources. From the rivers to the sea, fishing plays a vital role in Alaska's economy and culture—providing more than 60,000 jobs and producing over 5 billion pounds of seafood each year! Her fun fashion features coastal colors, ocean-inspired accents, and a touch of sparkle to reflect the glimmer of salmon in the Alaskan sun. Sally's favorite part of fishing is spending time with her family on the water, learning about sustainable practices and the importance of protecting our natural habitats. Whether it's reeling in halibut or casting for salmon, Sally Sue is hooked on agriculture in all its forms—and today, she reels us in with her creativity and state pride!

Knowledge

This area of competition is a fun way for the contestants to show their agriculture knowledge! A 100 question test covering all sectors of agriculture. 50 questions will cover one state specific question about agriculture. The other 50 questions will be general agriculture knowledge. State specific questions have been pulled from Agriculture Fact sheets found on agclassroom.org and will be linked on the website. A small practice test can also be found on the website.

Time: 90 minutes, extra time allowed if necessary.

Attire: White competition t-shirt, black athletic bottoms, tennis shoes.

Study on: <https://agclassroom.org/educational-resources/stats-facts/>



Photogenic

This area of competition is a fun photoshoot opportunity for each of our contestants. On-site photographers will take images of each contestant for 4 minutes. The contestant will then choose the image they wish to submit to the judges. These images will have simple editing before submitting to judges. These images will be available for purchase. Guardians can assist Young Miss and Junior Miss contestants with selecting their submission photos.

Time: 4 minutes of images and 1 minute to review and pick which one they wish to submit.

Attire: Cocktail Dress



National Packing List

- Formal Gown
- Interview Attire
- Advocate Attire
- Fun Fashion Attire
- Black Bottoms
- Black Athletic Bottoms
- Cocktail Dress for Photogenic
- Cocktail Dress for VIP Party
- Pageant heels
- Earrings, Necklace or Bracelet for each area of competition.
- Printed Resume
- Make-up
- Water bottle
- State Crown & Sash
- Snacks
- Phone Charger
- Signature Cards & Pen

National Prep

- Acquire Formal Gown
- Acquire Interview Attire
- Acquire Advocate Attire
- Acquire Fun Fashion Attire
- Acquire Black Bottoms
- Acquire Black Athletic Bottoms
- Acquire Cocktail Dress for Photogenic
- Acquire Cocktail Dress for VIP Party
- Acquire pageant heels.
- Practice walking in pageant heels.
- Write and practice advocate speech or demonstration.
- Practice interview questions.
- Write personal and Service & Advocacy Resumes (2)

Last Edited: August 3, 2025

Added the Emcee Card examples

2025

National Handbook

