

Miss **AGHERCULTURE**



2025

Judges Handbook



agherculture.com | +1 307-222-8258

Appearance

Young Miss:

- These contestants are allowed to have hair done however she chooses. For make-up she should only wear blush, lip gloss, and mascara. She can choose to get a spray tan (not required). She may have her nails done. She should wear pageant heels no taller than 2.5". Her formal wear gown should brush the floor.

Junior Miss:

- These contestants are allowed to have hair done however she chooses. For make-up she should only wear blush, lip gloss, and mascara. She can choose to get a spray tan (not required). She may have her nails done. She should wear pageant heels no taller than 3". Her formal wear gown should brush the floor.

Teen Miss, Miss, Ms., Mrs., Elegant Ms.:

- These contestants are allowed to have hair and make-up however she chooses. She can choose to get a spray tan (not required). She may have her nails done. She should wear pageant heels. Her formal wear gown should brush the floor.



Young Miss & Junior Miss



Teen Miss, Miss, Ms.,
Mrs., Elegant Ms.

Scoring

National Divisional Title:

- 25% - Interview
- 25% - Advocate
- 20% - Formal Wear
- 20% - Service & Advocacy
- 10% - Showmanship

On-Stage question will be used for any tie-breakers.

American Title:

- 10% - Interview
- 10% - Advocate
- 10% - Formal Wear
- 10% - Service & Advocacy
- 10% - Showmanship
- 10% - On-Stage Question
- 10% - Fun Fashion
- 10% - Knowledge
- 10% - Photogenic
- 10% - Resume

Judge scoring will be made on the online program Bombyhead. All areas of competition will be scored out of 20 points and judges can score using 0.5 points.

*Reminder you can **MUST** compete in National Divisional.
Competing for American is **OPTIONAL**.

Interview

The goal of this area of competition is to have a one-on-one conversation about yourself, goals, platform and more with each judge. This interview will be round robin style, where four contestants will be in a room with the four judges. Each contestant will get 3 minutes in front of each judge to have their interview. Each judge's table will be spaced out, so your conversation shouldn't distract other contestants. Example interview questions are available on the website. Each contestant is more than welcome to bring a resume with them to hand to the judges.

Time: 3 minutes with each judge = 12 minutes total in interview room.

Attire: Pageant interview Dress, Blazer, Jumpsuit, etc.

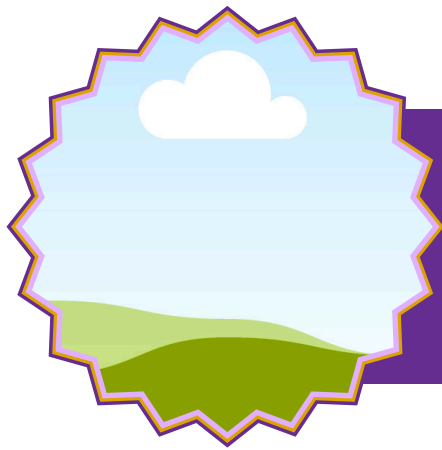
Highest Score: 20

Lowest Score: 5

up to 15 points: communication, body language, conversation, knowledgeable, questions answered effectively, etc.

up to 5 points = Attire & Poise. Appropriate for interview, well fitting, professional. Sitting professionally in chair.

**The following is an example of the resume. The contestant will create their resume however she pleases. The only requirement is to include "Why should I become the Next Miss agHERculture?".



Queen Name

Title
Platform

WHY I SHOULD BECOME THE NEXT MISS AGHERCULTURE

Explination...

EDUCATION

Bachelor of Business Administration

Jan 2019 - Feb 2021

University of Business Excellence

- Major in International Business.
- Final GPA: 3.90

Foundation in Business Administration

Jan 2018 - Dec 2018

Borcelle University

- Final GPA: 3.80

KEY SKILLS

- Office Suite software.
- Data entry.
- Organizational and time management skills.
- Corporate communications.
- Problem solving.
- Customer service.
- Attention to details.
- Fluent in English and Mandarin.

EDUCATIONAL AWARDS & HONORS

- Awards
- Honors

SCHOLASTIC & CAREER GOALS

- Obtain a Doctorate in Veterinary Medicine (DVM)
- Pass the National and State Licensing: In the United States, you will need to pass the North American Veterinary Licensing Exam (NAVLE).
- Obtain a position at a small town Veternarian clinc specifically helping small animals.

INTERESTING FACTS

Can run a mile in less than 7 minutes, enjoy reading and have read more than 100 books this past year, loving making sourdough, and enjoy hiking.

Advocate

This area of competition is for the contestants to become a spokesmodel for their personal platforms. Personal platforms should be the center of the queens reign, something they inform, encourage and promote to the general public. This can be preformed in a speech or demonstration. Each contestant will have access to a projector, small table, and easel if necessary. The microphone can be on the stand or be held by contestant. When the contestant submits national entry fees and forms, they will need to notify national staff of these needs in the "Advocate" section.

Time: 3 minutes. For every 20 seconds over, 1 point will be deducted from each judge. A large LED countdown clock will be displayed on the judges table for the contestant to look at.

Attire: Contestant Choice

Highest Score: 20

Lowest Score: 5

up to 15 points: communication, body language, conversation, knowledgeable, flow of presentation, preparedness, etc.

up to 5 points: Attire & Poise. Appropriate for topic, well-fitting, professional.

Formal Wear

This area of competition is for the contestants to express their natural beauty and exert confidence while in gown of their choice. Each contestant will prepare a 60-75 second monologue in third person about themselves for the emcee(s) to read while the contestant is modeling on stage. An example of "Formal Wear Emcee Cards are available on the website". Modeling pattern will be posted on the website.

Time: 60 - 75 seconds. For every 20 seconds over, 1 point will be deducted from each judge. A large LED countdown clock will be displayed on the judges table for the contestant to look at.

Attire: Age appropriate full length gown.

Highest Score: 20

Lowest Score: 5

up to 15 points: Formal Wear should be the contestant's most elegant garment of the production. Rhinestones and/or AB Stones are allowed for the Evening Gown and should complement the model and gown alike. Modeling should be graceful and include executing three-point turns, posing, and slowly turning at each point. Contestants should present beauty and femininity while on stage.

up to 5 points: Biography read by emcee: Biography of the contestant.

Advocacy & Service Interview

This area of competition is for the contestants to display their adventures and community service acts during their state reign. Each contestant will create a Community Services & Advocacy Resume which the judges will review and ask questions to the contestant during an interview. An example resume is posted on the website. This interview is panel interview.

Time: 3 minutes. Contestants will hear a knock on the door when they have 30 seconds remaining.

Attire: White Competition T-shirt & black bottoms of choice.

Highest Score: 20

Lowest Score: 5

up to 5 points: communication, body language, conversation, knowledgeable, questions answered effectively, etc.

up to 10 points: Community Service & Advocacy Resume: Should include all community service and advocacy appearances made while in Miss agHERculture crown and sash. The contestant should be able to answer any question regarding the resume.

up to 5 points: Attire & Poise. Appropriate for the topic, well-fitting, professional. Sitting professionally in a chair.

**The following is an example of a resume. The contestant will create their resume however they please. The only requirement is listing the Service or Advocacy project + date.

[illegible]

On-Stage Question

The only contestants eligible to compete in on-stage question are those who have secured a top spot in the National age divisions. At this point of the competition all areas of competition have been scored National and American. Each age division will have the highest scoring 3, 5, or 10 contestants (depending on division size) continue to receive a question in front of the crowd. This will be an age appropriate, non-politically based question. There will be three questions, Young Miss & Junior Miss will receive the same question. Teen Miss & Miss will receive the same question and Ms., Mrs., and Elegant Ms. will receive the same question. Contestants who made it into finals will be held in a room without the ability to listen to the question. Once the contestant has answered the question they will not be allowed back in the holding room.

Time: 60 seconds to answer the question. For every 20 seconds over, 1 point will be deducted from each judge. A large LED countdown clock will be displayed on the judges table for the contestant to look at.

Attire: Formal Wear - contestants will wear the same dress from Formal Wear competition.

Highest Score: 20

Lowest Score: 5

up to 20 points: Clear complete answer, knowledgeable, thought through, poised through delivery.

Fun Fashion

This extra area of competition contestants will express their creativity and love for all sectors of agriculture through their attire. A written description of the contestants attire will be read when the contestant is modeling. This emcee card can and should include agriculture facts about their fun fashion.

Time: 60 - 75 seconds of modeling. For every 20 seconds over, 1 point will be deducted from each judge.

Attire: Creative costume either bought or made to represent agriculture.

Highest Score: 20

Lowest Score: 5

up to 10 points: Fun Fashion should be the contestant's most creative garment of the production. The garment should bring attention to detail which should be easily notifiable about what the industry it is representing. Fun Fashion can be purchased or created.

up to 10 points: Review read by emcee: The review read by the emcees should be informational and explain how the fun fashion compliments the contestant. The review should express the contestants knowledge, creativity and ability to promote the sector of agriculture.

Photogenic

This area of competition is a fun photoshoot opportunity for each of our contestants. On-site photographers will take images (headshots, half and full body) of each contestant for 4 minutes. The contestants will then choose the image they wish to submit to the judges. This image will have simple editing before submitting to judges and will be displayed on the Miss agHERculture magazine cover (see example on next page. All images will be available for purchase. Guardians can assist Young Miss and Junior Miss contestants with selecting their submission photos.

Time: 4 minutes of images and 1 minute to review and pick which one they wish to submit.

Attire: Cocktail Dress

Highest Score: 20
Lowest Score: 5

up to 15 points: The photo should fit the magazine cover appropriately, the pose should compliment the contestant. The contestant should express her personality, beauty, happiness, and confidence within the photo.

up to 5 points = Attire. Appropriate for the age division and appropriate hair and make-up.

**The following is an example of the Magazine cover.

MISS
AGHERCULTURE
MAGAZINE

QUEEN NAME, TITLE

70
AGRICULTURE
ADVOCATES

10
NATIONAL TITLES

NATIONAL
PAGEANT

JANUARY 2026



Showmanship

Each contestant should be poised, polite, confident, respectful, and gracious on and off the stage. You never know where the judges may be throughout the pageant weekend. This score, should be an easy points for each contestant!

All contestants will be judged throughout pageant weekend. The judges may also look at social media accounts of each contestant.

Highest Score: 20

Lowest Score: 5

up to 20 points: The contestant physical impression should be poised, polite, confident, respectful and graceful at all times! The contestants social media impression should also be professional, informative, and respectful towards the agriculture industry.

Last Edited: August 3rd, 2025

2025

Judges Handbook

